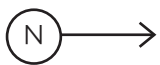
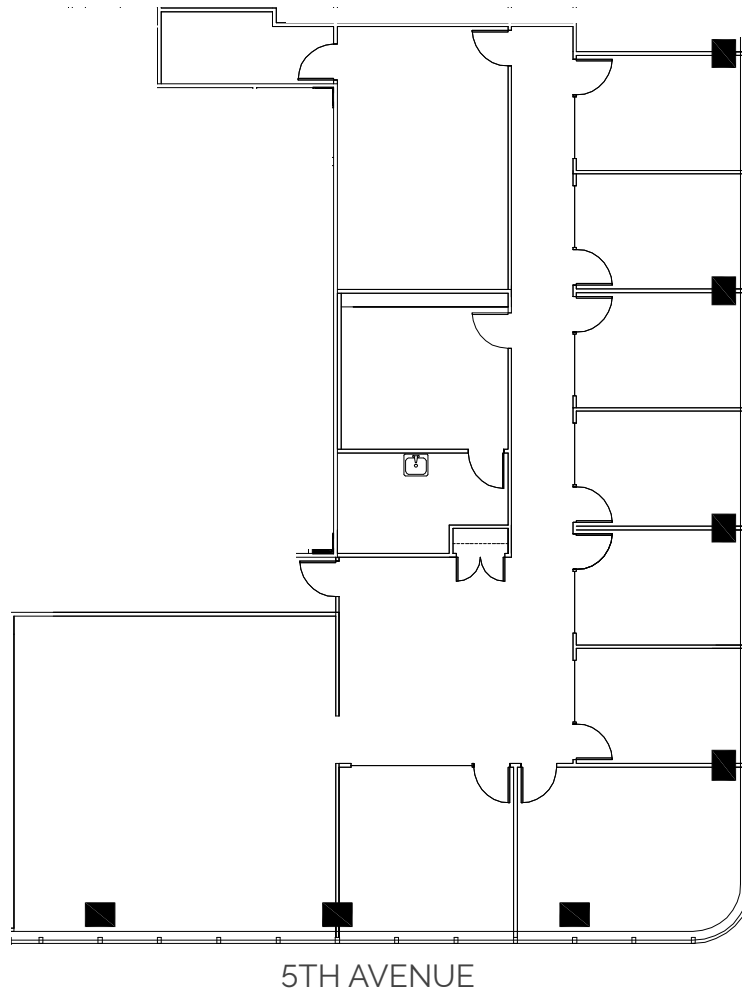


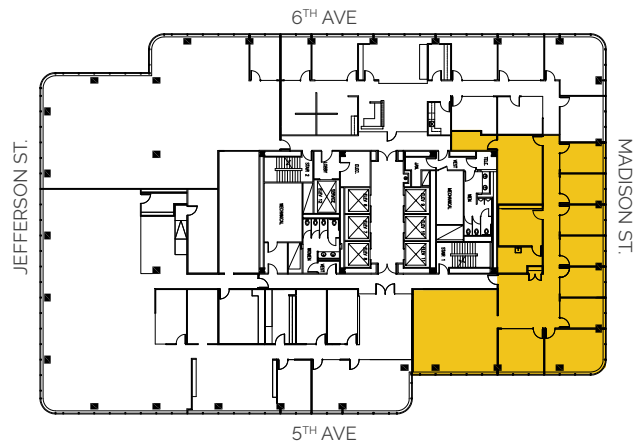
# 22<sup>ND</sup> FLOOR SUITE 2250

4,410 RSF



## SPACE FEATURES

- Multiple private offices
- Breakroom with plumbing
- Amazing city views



Dan Swift  
+1 503 279 1765  
dan.swift@cushwake.com

Lana Baldock  
+1 503 279 1775  
lana.baldock@cushwake.com